

DSWY2596

LM2596 step down regulator

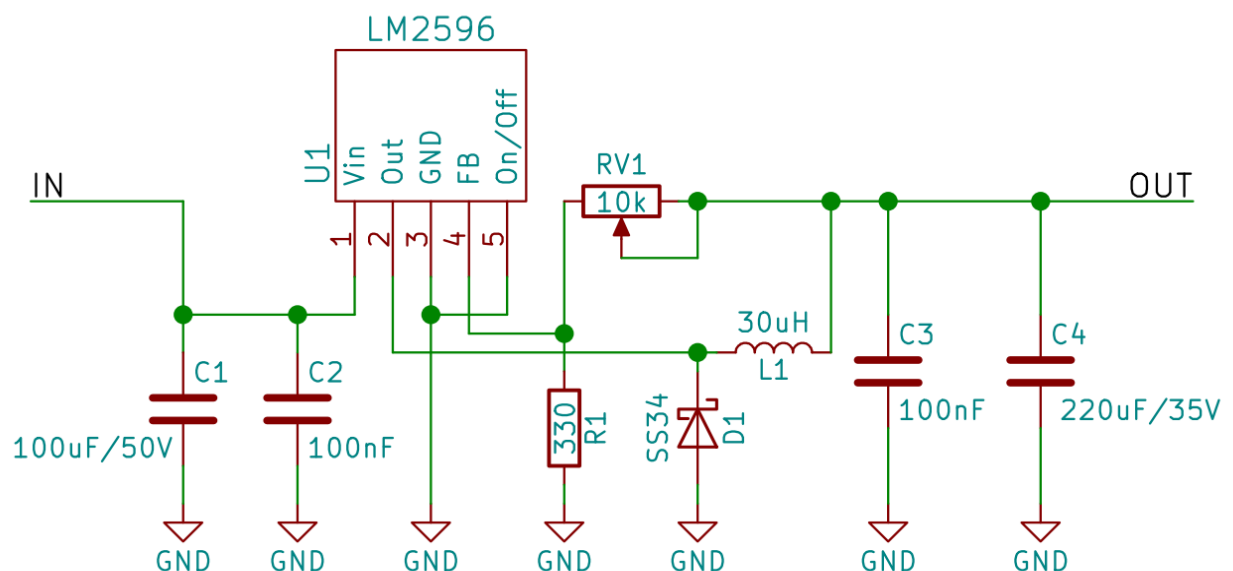
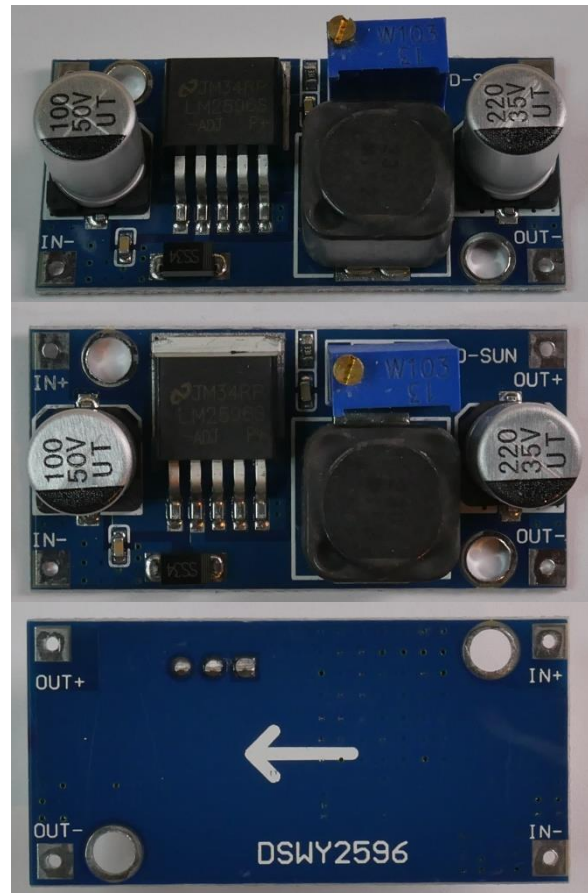
Features

Claimed specification

- Input voltage: 4-40V
- Output voltage: 1.25-35V, adjustable
- Size: 43,6mm x 21mm x 14mm
- Max. output current: 2A

Additional information

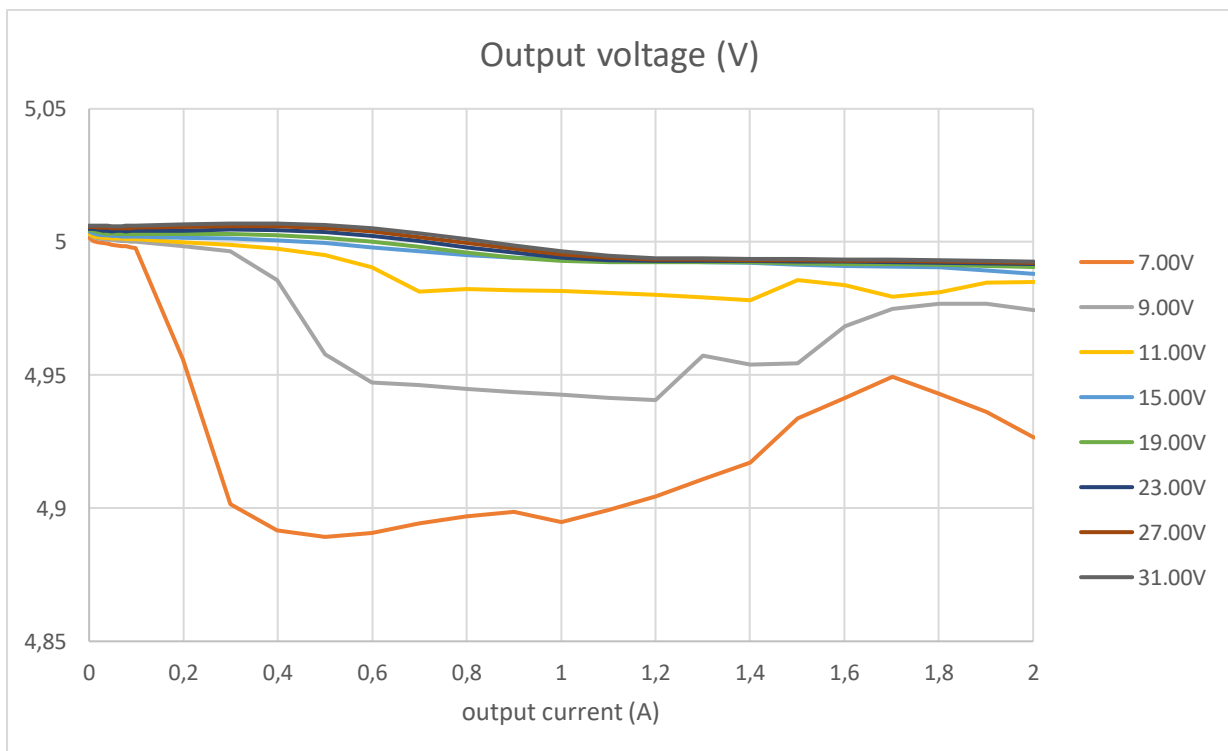
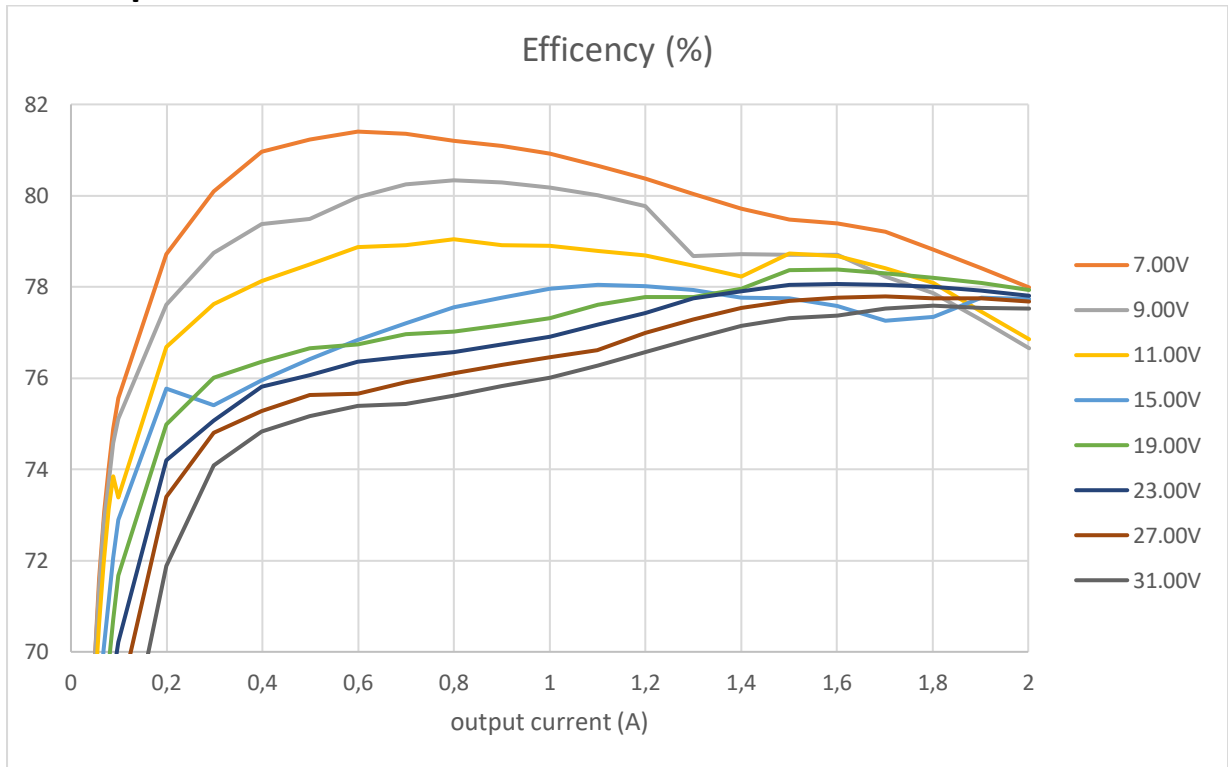
- 3-7mA idle current
- Adjusting the voltage is very fiddly
- The output voltage needs to be at least 2V below the input voltage



DSWY2596

LM2596 step down regulator

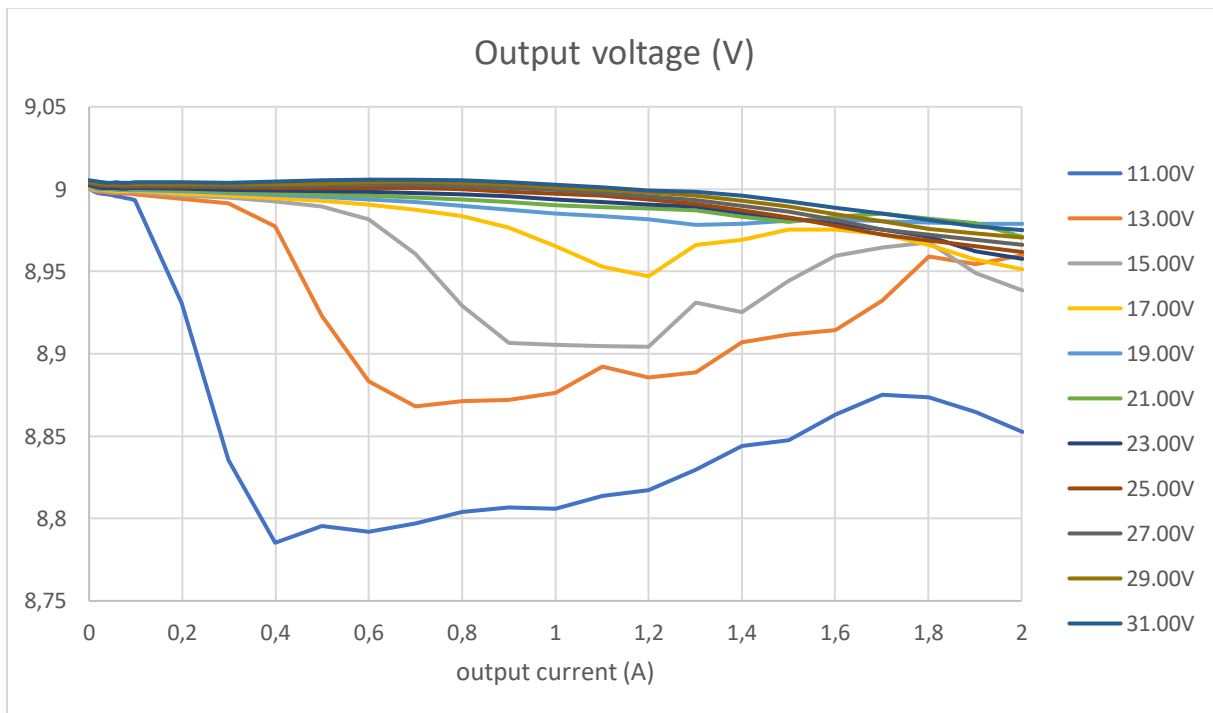
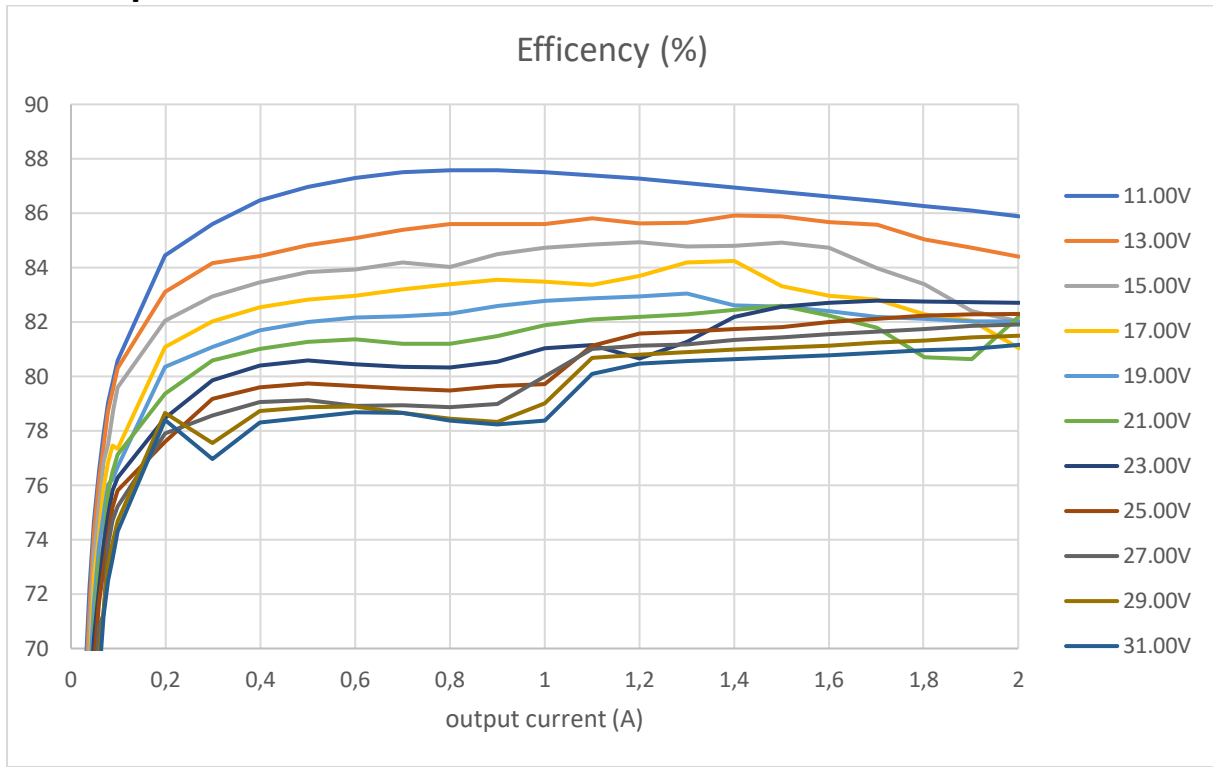
5V Output



DSWY2596

LM2596 step down regulator

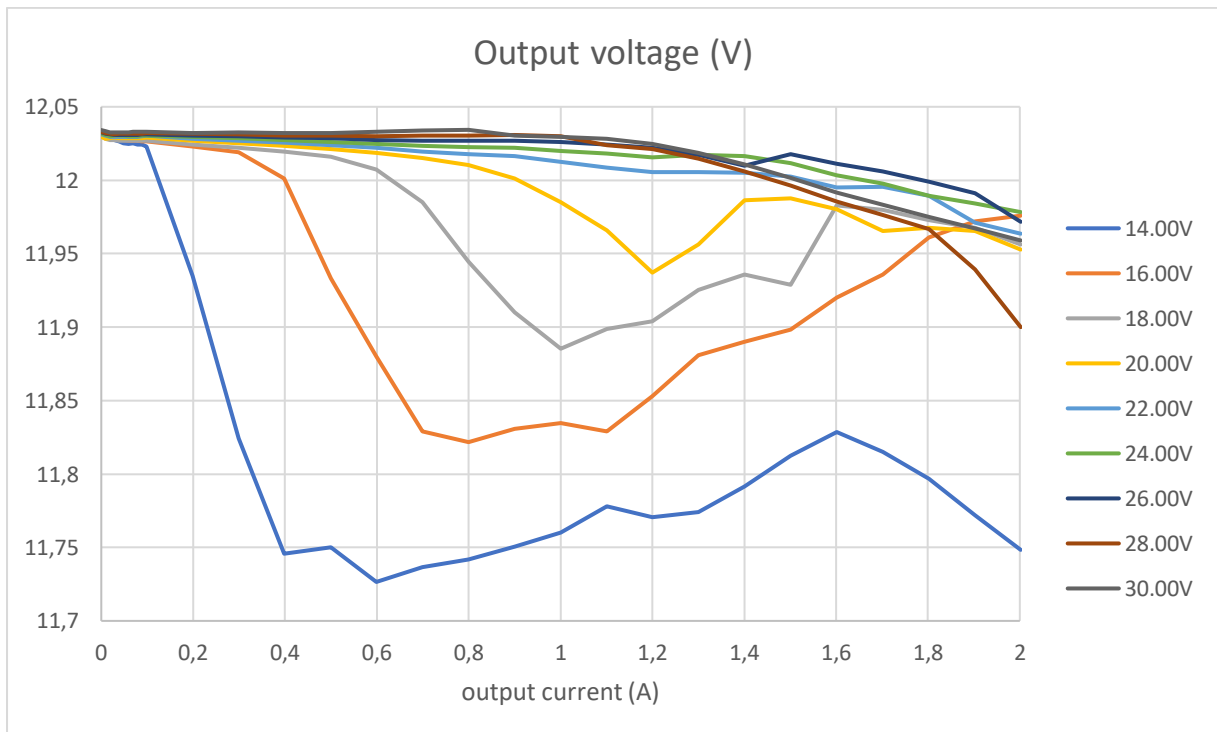
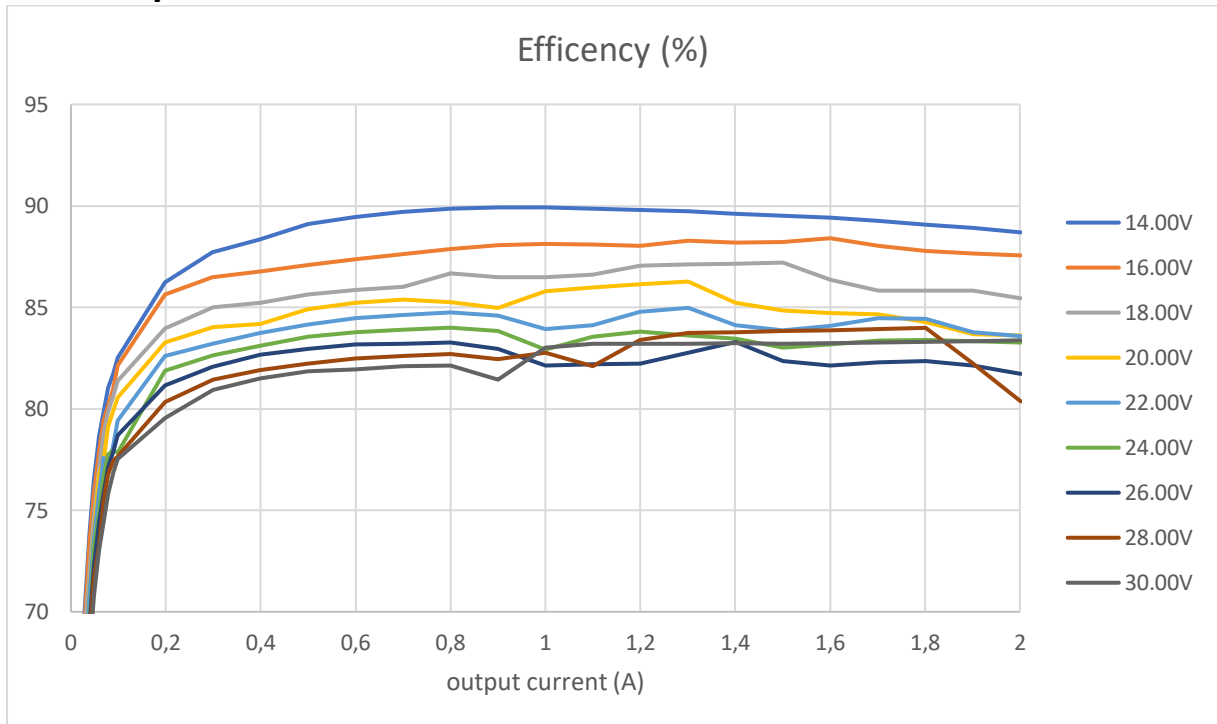
9V Output



DSWY2596

LM2596 step down regulator

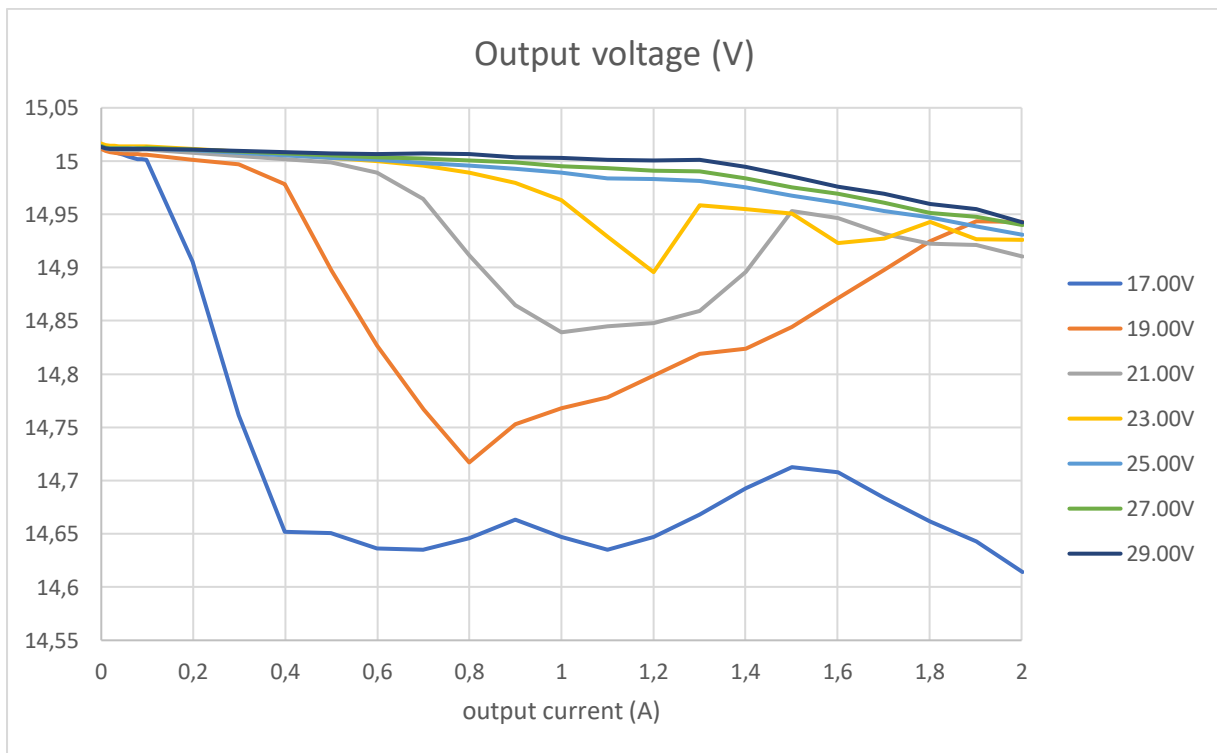
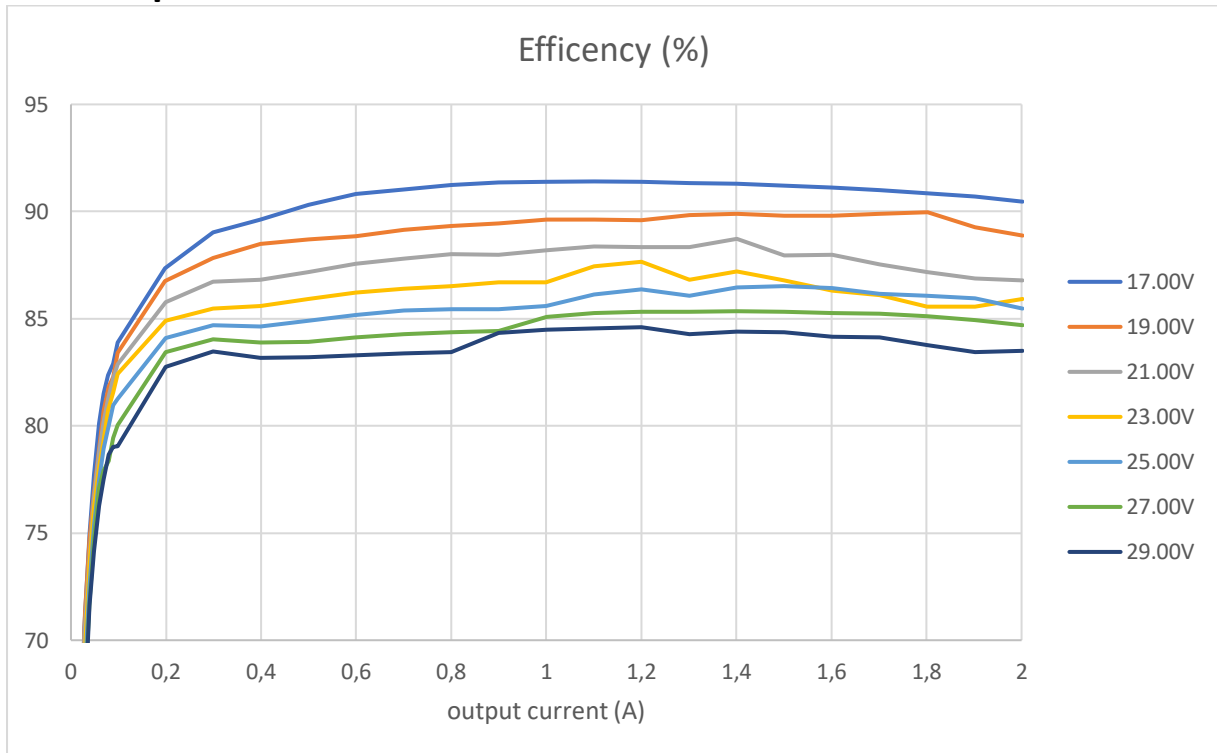
12V Output



DSWY2596

LM2596 step down regulator

15V Output



DSWY2596

LM2596 step down regulator

20V Output

